

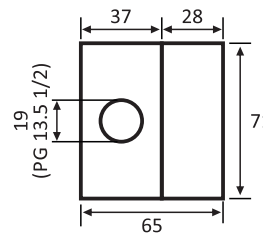
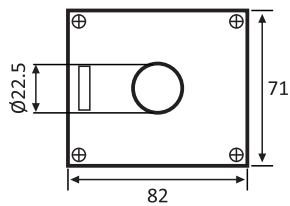
As botoeiras vazias são ideais para serem utilizadas com botões ou sinaleiros de furação $\varnothing 22\text{mm}$. Disponíveis nos modelos de 1 a 5 furos. Grau de proteção IP65.

INFORMAÇÕES GERAIS

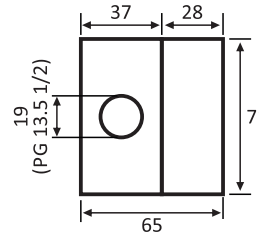
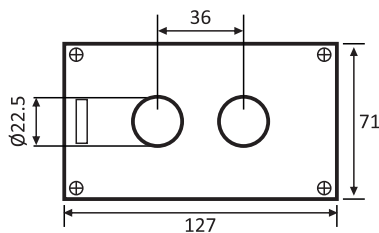
Instalação	Caixa de sobrepôr
Diâmetro dos furos	$\varnothing 22.5\text{mm}$
Entrada do cabo	Prensa cabo PG 13.5 (1/2) ou incisão simples
Temperatura do trabalho	$-20^{\circ}\text{C} \sim +60^{\circ}\text{C}$
Cor da tampa	Cinza
Material do invólucro	Policarbonato
Conformidade	IEC 947-5-1

DIMENSÕES (MM)

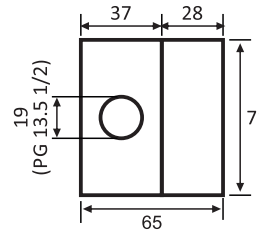
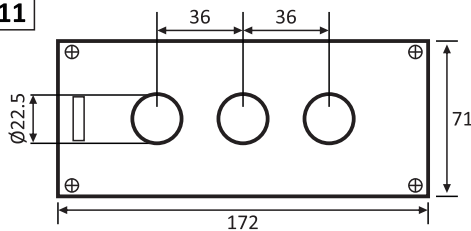
REF: 26009



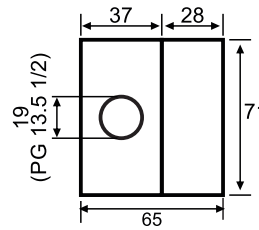
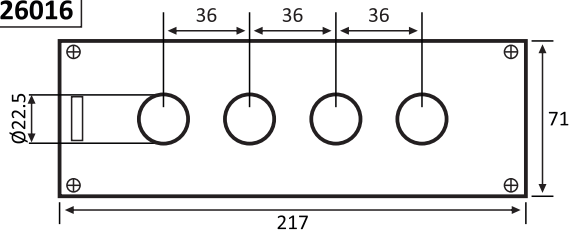
REF: 26010



REF: 26011



REF: 26016



REF: 26015

